

LASER SHIELDING SOLUTIONS

FROM PLASKOLITE



TUFFAK® LS FOR LASER SHIELDING APPLICATIONS

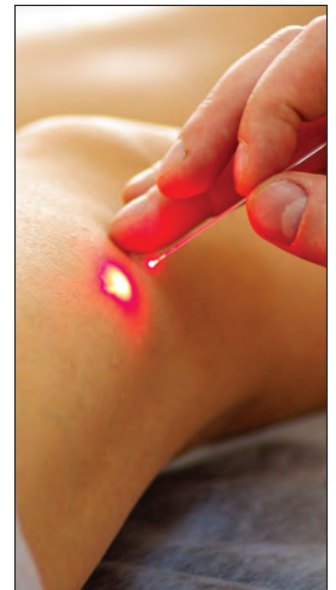
WHEN USING CO₂ CUTTING, MEDICAL, DENTAL, DERMATOLOGICAL, GREEN AND RESEARCH LASERS

Working with high intensity lasers doesn't need to lead to unsafe conditions. Using TUFFAK LS for laser shielding barriers protects eyes and skin from being harmed by accidental exposure to a laser beam. By installing specialty tinted safety screens, windows, enclosures and partitions of optically clear polycarbonate, high visibility is achievable while still maintaining the highest personal safety standards. TUFFAK LS is available in 0.118", 2'x 4', 4'x 8' sheets and in three standard transparent colors; IR blocking light gray, visible light blocking bright amber and UV blocking yellow.

Features and benefits of using TUFFAK LS

- » Outstanding impact strength
- » High temperature resistance
- » High light blocking properties at targeted wavelengths
- » High optical clarity
- » High Optical Density protection
- » Low weight compared to glass
- » Available in IR, Visible and UV laser blocking tints
- » Certified to ANSI Z136.7: Testing and Labeling of Laser Protective Equipment

TUFFAK LS polycarbonate sheets are designed for a wide range of applications, including door and room windows, standing panels and screens, modular barriers, and enclosures.



Applications where portable laser shielding is appropriate

PLASKOLITE



Alro Plastics

Sheet • Rod • Tube • Film • Profiles • Machined Parts

Since 1987

PRODUCTS

All trademarks listed below are the property of their respective owners.

ABS
Acetal Copolymer
Acetron® GP
Acrylic
Boltaron®
Cast Nylon
Chemgrate®
Clear PVC
Composolite®
Corrugated
CPVC
Cutting Board
Delrin®
Densetec®
Detectables
DuraDek®
DuraGrate®
DuraGrid®
DuraTread®
Duratron®
Ertalyte®
Extren®
Extrusions
Fiberglass Grating
Films

Foamlite®
Fluorosint®
G10 / FR-4
GPO-3
HDPE
Hydex® 202/301
Hydex® 4101/4101L
Hydlar®
Industrial Laminates
Ketron® PEEK
King ColorCore®
King Hy-Pact®
King StarBoard®
KomaALU®
KomaTEX®
Kynar® PVDF
LDPE
Life Science Grades
LubX® C / CV
MC® 901/MC® 907
Medical Grades
Micarta®
Noryl® PPO
Nyla-Glide GR™
Nylatron®

Nyloil®
Nylon
Optix®
Palight®
Palsun®
PBT
PEEK
PET
PETG
Phenolic
Plexiglas®
Polycarbonate
Polyethylene
Polypropylene
Polystone®
Polystyrene
Polysulfone
PPS
Precision Board Plus
Profiles
Propylux®
Proteus® LF PP
PTFE / TFE
PVC
PVC Foam Sheet

PVDF
Radel®
Reprocessed UHMW
Rubber
SafPlate®
SafRail™
Sanalite®
Semitron®
Sustarin® C
Tecaform®
Tecasint™
Techtron® PPS

TIVAR® 1000
TIVAR® 88
Tooling Board
Torlon® PAI
Tuffak®
UHMW-PE
Ultem®
Urethane
VHMW-PE
Vivak®
Zelux®



PROCESSING



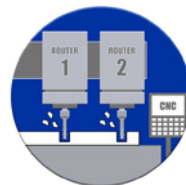
Panel Saw Cutting
Sheets up to 8" thick



Band Saw Cutting
Rounds up to 18" dia.



Waterjet
Sheets up to 10" thick



Routing
Sheets up to 4" thick



Milling
Pieces up to 6" thick



Welding
Hot Gas & Extrusion

LOCATIONS

DETROIT

1750 E. Heights Drive
Madison Heights, MI 48071
Ph: (800) 877-2576

GRAND RAPIDS

4670 60th SE
Grand Rapids, MI 49512
Ph: (616) 656-2820

JACKSON

2218 Enterprise
Jackson, MI 49204
Ph: (517) 787-5500

LOUISVILLE

5500 Shepherdsville Rd
Suite #300
Louisville, KY 40228
Ph: (502) 968-9980

CHICAGO

279 Madsen Drive
Suite #102
Bloomingdale, IL 60108
Ph: (888) 877-2576

CLEARWATER

12171 62nd Street
Suite #150
Largo, FL 33773
Ph: (727) 573-1480



Alro Plastics - Jackson, Michigan