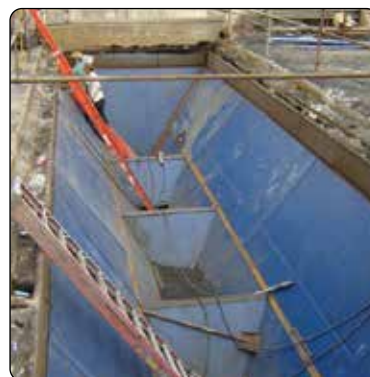


TIVAR® UHMW Linings

TIVAR® 88 and 88-2 UHMW Blue Lining Materials



Recognized worldwide as a premium lining material for bulk material handling, TIVAR® 88 UHMW is noted for its performance in promoting bulk solids flow of cohesive or non-free flowing materials due to its low surface friction.



America's Premier Metals & Plastics Service Center



Alro Plastics
Your Source for Performance Plastics

alro.com

TIVAR® 88 & 88-2 Linings

For Mining & Mineral Processing



Sticky bulk materials such as: coal, bauxite, copper concentrates, potash, clay, overburden and other such cohesive materials require a slippery surface to permit bulk materials to move from point A to point B. TIVAR® 88 and TIVAR® 88-2 have a low coefficient of friction that permits materials to move freely and discharge without hang-up.



Rail cars lined with TIVAR® 88-2 prevent sticking of sub-bituminous and ignite coals



TIVAR® 88-2 lined receiving hopper provides reliable bulk material flow

TIVAR® 88-2: Silicone additives provide smooth surfaces for bulk materials to slide

Case Study: TIVAR® 88-2 Receiving Hopper Liner



Four outlet phosphate receiving hopper lined with TIVAR® 88-2

Problem: Original hopper liner was wearing, causing efficiency issues during production, prompting an immediate need for replacement.

Solution: Replace with 3/4" TIVAR® 88-2 for added wear resistance and rapid release technology.

Benefits: TIVAR® 88-2 liner was produced with oversize welded panels to eliminate seams and increase flow and production speeds.

Key Benefits

- Promotes reliable bulk material flow
- Wear, chemical and corrosion-resistant
- Low coefficient of friction (C.O.F.)
- No moisture absorption
- Reduces and/or eliminates plugging & arching

Applications

- Hoppers
- Bins
- Rail Cars
- Slider Beds
- Dribble Chutes
- Launder Boxes
- Heavy Mining Equipment

TIVAR® 88 & 88-2 Linings

For Mining & Mineral Processing



Some conical hoppers can even be lined with a one piece TIVAR® 88-2 "drop in" liner for a fast, clean installation



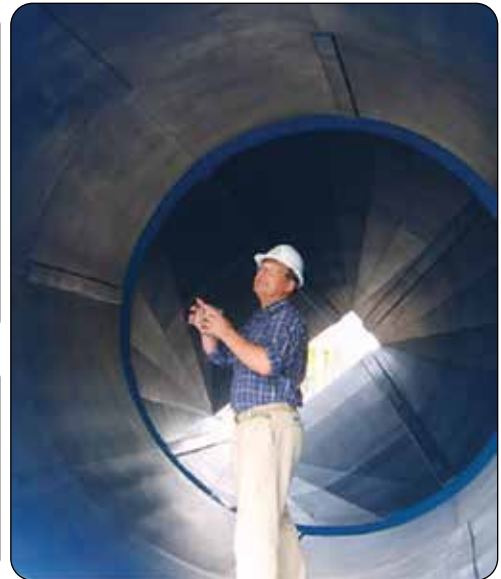
TIVAR® 88 and 88-2 liners can be designed to fit into a variety of structures with various geometries



TIVAR® 88-2 tube liner inserted into a steel down comer or standpipe: eliminates sticking & bridging issues

Mitsubishi Chemical offers Design, Fabrication & Installation

Mitsubishi Chemical Group's STE (System TIVAR® Engineering) is made up of specialty engineers with different degrees of experience that is second to none. Collectively, they have over 100 years of expertise in the design, fabrication and installation of various TIVAR® products into structures like hoppers, bins, chutes, standpipes, ash-conditioners, rail cars, ships and other such structures that move or store bulk materials.



America's Premier Metals & Plastics Service Center



Alro Plastics
Your Source for Performance Plastics

alro.com



Alro Plastics

Your Source for Performance Plastics

PRODUCTS

All trademarks listed below are the property of their respective owners.

ABS
Acetal Copolymer
Acetron® GP
Acrylic
Boltaron®
Cast Nylon
Clear PVC
Composolite®
Corrugated
CPVC
Cutting Board
Delrin®
Densetec®
Detectables
DuraDek®
DuraGrate®
DuraGrid®
Duratron®
Ertalyte®
Extren®
Extrusions
EZ-Pro/Durawood
Fiberglass Grating
Foamlite®

Fluorosint®
G10 / FR-4
GPO-3
HDPE
Hydex® 202/301
Hydex® 4101/4101L
Hydlar®
Industrial Laminates
Ketron® PEEK
King ColorCore®
King Hy-Pact®
King StarBoard®
Kynar® PVDF
LDPE
Life Science Grades
LubX® C / CV
MC® 901/MC® 907
Medical Grades
Micarta®
Noryl® PPO
Nyla-Glide GR™
Nylatron®
Nyloil®
Nylon

OPTIX®
Palight®
Palsun®
PBT
PEEK
PET
PETG
Phenolic
Plexiglas®
Polycarbonate
Polyethylene
Polypropylene
Polystone®
Polystyrene
Polysulfone
PPS
Precision Board Plus
Profiles
Propylux®
Proteus® LF PP
PTFE / TFE
PVC
PVC Foam Sheet
PVDF

Radel®
Repro UHMW
Rubber
SafPlate®
Sanalite®
Semitron®
Sustarin® C
Tecaform®
Tecasint™
Techtron® PPS
TIVAR® 1000
TIVAR® 88

Tooling Board
Torlon® PAI
TUFFAK®
UHMW-PE
Ultem®
Urethane
VHMW-PE
VIVAK®
Zelux®



PROCESSING



Panel Saw Cutting
Sheets up to 8" thick



Band Saw Cutting
Rounds up to 18" dia.



Waterjet
Sheets up to 10" thick



Routing
Sheets up to 4" thick



Milling
Pieces up to 6" thick



Welding
Hot Gas & Extrusion

LOCATIONS

DETROIT

1750 E. Heights Drive
Madison Heights, MI 48071
Ph: (800) 877-2576

GRAND RAPIDS

4670 60th SE
Grand Rapids, MI 49512
Ph: (616) 656-2820

JACKSON

2218 Enterprise
Jackson, MI 49204
Ph: (517) 787-5500

CHICAGO

279 Madsen Drive
Suite #102
Bloomington, IL 60108
Ph: (888) 877-2576

CLEARWATER

12171 62nd Street
Suite #150
Largo, FL 33773
Ph: (727) 573-1480

LOUISVILLE

5500 Shepherdsville Rd
Suite #300
Louisville, KY 40228
Ph: (502) 968-9980



alroplastics.com