



Alro Plastics

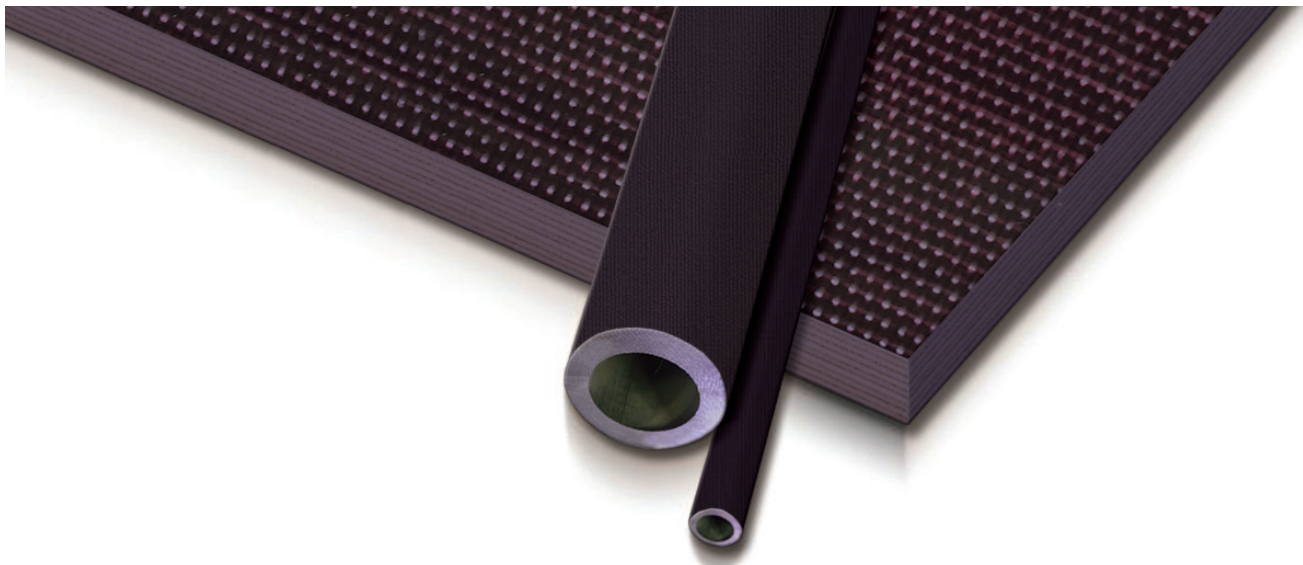
Your Source for Engineering Plastics

Sheet • Rod • Tube • Film • Profiles • Machined Parts

Acculam[®] Matrix HT[™] G14

A new thermoset composite comprised of woven fiberglass and a unique blend of high temperature resin binders developed for applications that demand superior performance over wide temperatures. It maintains a high percentage of mechanical & insulating properties up to 500 °F. Matrix HT has outstanding flexural and impact strength. It maintains rigidity with excellent dimensional stability and creep resistance over wide temperature ranges, as well as good resistance to moisture, chemicals, alkali and acids. It does not melt or soften at high temperatures, and offers users extended application capability beyond typical NEMA grades. Unlike thermoplastics, Matrix HT does not lose strength.

	Acculam [®] Matrix HT G14	PEEK HT PEEK-30% GF	Torlon 5530 PAI-30% GF	Ryton PPS-40% GF	Ultem 2300 PEI-30% GF
Flexural Strength - psi (weighted vs max value)	63,000 100%	27,000 43%	20,000 32%	12,000 19%	33,900 54%
Youngs Modulus - mpsi (weighted vs max value)	3.50 100%	1.00 29%	0.90 26%	1.00 29%	1.30 37%
Impact Strength - ft lbs-in (weighted vs max value)	17.00 100%	1.40 8%	1.30 8%	1.00 6%	1.60 9%
Compressive Strength - psi (weighted vs max value)	80,000 100%	20,000 25%	38,000 48%	22,000 28%	32,000 40%
Temperature Index - °F (weighted vs max value)	500 °F 100%	482 °F 96%	500 °F 100%	425 °F 85%	340 °F 68%
Tg - °F (weighted vs max value)	536 °F 100%	320 °F 60%	537 °F 100%	200 °F 37%	410 °F 76%
Price Points / LB (vs max value)	3.3%	37.2%	100.0%	45.9%	12.1%
Price Points / SF (vs max value)	3.7%	29.6%	100.0%	46.1%	11.2%





Alro Plastics

Your Source for Engineering Plastics

Sheet • Rod • Tube • Film • Profiles • Machined Parts

Alro Plastics is an industry leader in supplying engineering plastic shapes and parts. We cut and/or ship the same day your order is placed and provide value added processing to meet the most demanding processing requirements.

PRODUCTS

ABS
Acetal Copolymer
Acetron® GP
Acrylic
Boltaron®
Cast Nylon
Chemgrate®
Clear PVC
Composolite®
Corrugated
CPVC
Cutting Board
Delrin®
Densetec®
Detectables
DuraDek®
DuraGrate®
DuraGrid®
DuraTread®
Duratron®
Ertalyte®
Extren®
Extrusions
Fiberglass Grating
Films

Foamlite®
Fluorosint®
G10 / FR-4
GPO-3
HDPE
Hydex® 202/301
Hydex® 4101/4101L
Hydlar® Z
Industrial Laminates
Ketron® PEEK
King ColorCore®
King Hy-Pact®
King StarBoard®
KomaALU®
KomaTEX®
Kynar® PVDF
LDPE
Life Science Grades
LubX® C / CV
Makrolon®
MC® 901 / 907
Medical Grades
Micarta®
Noryl® PPO
Nyla-Glide GR™

Nylatron®
Nyloil®
Nylon
Optix®
Palight®
Palsun®
PBT
PEEK
PET
PETG
Phenolic
Plexiglas®
Polycarbonate
Polyethylene
Polypropylene
Polystone®
Polystyrene
Polysulfone
PPS
Precision Board Plus
Profiles
Propylux®
Proteus® LF PP
PTFE / TFE
PVC

PVC Foam Sheet
PVDF
Radel®
Reprocessed UHMW
Rubber
SafPlate®
SafRail™
Sanalite®
Semitron®
Sustarin® C
Tecaform®
Tecasint™
Techtron® PPS
TIVAR® 1000
TIVAR® 88
TIVAR® H.O.T.
Tooling Board
Torlon® PAI
UHMW-PE
Ultem®
Urethane
VHMW-PE
Vivak®
WallTuf®
Zelux®

Many products available in sheet, rod, tube and custom shapes. Please call for inquiry.



CHICAGO

279 Madsen Drive
Bloomington, IL 60108
Phone: (888) 877-2576
Fax: (616) 656-2828

CLEARWATER

10585 47th Street N.
Clearwater, FL 33762
Phone: (727) 573-1480
Fax: (727) 573-1632
Toll Free: (877) 968-9980

GRAND RAPIDS

4150 Broadmoor SE
Grand Rapids, MI 49512
Phone: (616) 656-2820
Fax: (616) 656-2828
Toll Free: (888) 877-2576

JACKSON

2218 Enterprise
Jackson, MI 49204
Phone: (517) 787-5500
Fax: (517) 787-6380
Toll Free: (800) 877-2576

LOUISVILLE

5620 Shepherdsville Rd
Louisville, KY 40228
Phone: (502) 968-9980
Fax: (502) 968-5530
Toll Free: (877) 968-9980

MADISON HEIGHTS

1750 E. Heights Drive
Madison Heights, MI 48071
Phone: (800) 877-2576
Fax: (517) 787-6380

alroplastics.com

E9-17

800-877-ALRO

2 5 7 6